

Next Score

TOP MOVER QUOTES

FREE MOVING QUOTES 100%

\$999 LONG DISTANCE MOVING
Full Service Anywhere on the US

GO

See which Boston streets will be overrun with moving trucks

E-MAIL

FACEBOOK

TWITTER



LINKEDIN

0



JOHN TLUMACKI/GLOBE STAFF, FILE 2013

Move-in day for college students in the Allston neighborhoods.

By [Matt Rocheleau](#)

GLOBE STAFF AUGUST 28, 2017

Roughly two-thirds of leases for the more than 165,000 apartments in Boston expire as August transitions to September, officials estimate. And that means the arrival of a herd of moving trucks.

So many trucks.

The city asks movers to [apply for special permits](#) to reserve a curbside spot outside their apartment if they're planning to use a moving truck.

ADVERTISEMENT



Free Moving Quotes

STEP 1:
Enter Your Zip

»»»»

STEP 2:
Get 4 Moving Quotes

 MovingMatrix.com

City [records](#) show those permits [spike dramatically](#) each year on Aug. 31 and Sept. 1.

Get The Weekender in your inbox:

The Globe's top picks for what to see and do each weekend, in Boston and beyond.

Sign Up

This year, according to city [records](#) as of Friday, 503 permits were set to be active citywide on Aug. 31 and another 775 on Sept. 1. It's likely those numbers will increase as residents have until Tuesday to obtain a permit in time for Sept. 1.

Those figures don't account for movers who won't get a permit for their moving truck.

By comparison, on an average day in 2016, not including Aug. 31 or Sept. 1, there were about 37 moving truck permits active, city data shows.

(Fun fact: The only two days when there were no active moving truck permits last year? Christmas Eve and Christmas Day. One poor soul had a moving permit active for Thanksgiving Day.)

ADVERTISEMENT



Free Moving Quotes

STEP 1:
Enter Your Zip

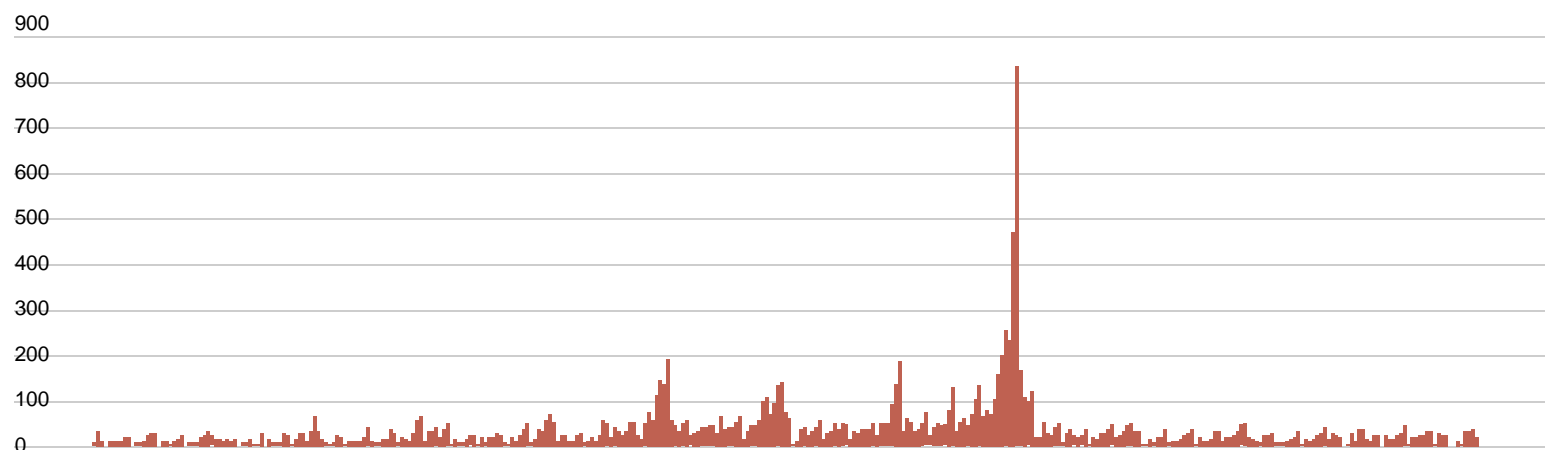
»»»»

STEP 2:
Get 4 Moving Quotes

MovingMatrix.com

The chart below, based on 2015 data, shows just how dramatic the increase in trucks is on Aug. 31 and Sept. 1.

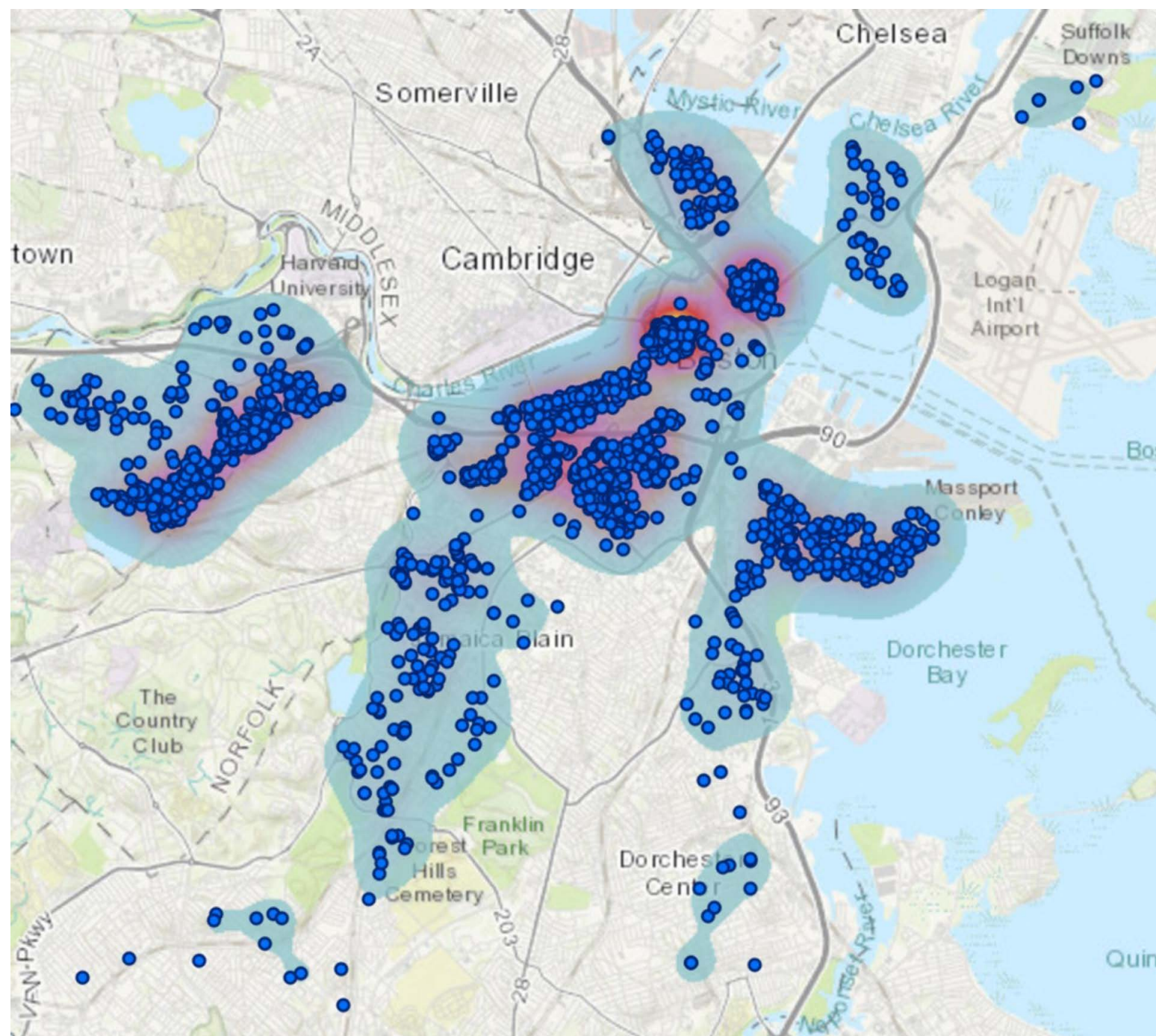
Moving truck permits in Boston, by day of year



JANUARY 1

DECEMBER 31
PATRICK GARVIN/GLOBE STAFF

The map below shows how certain neighborhoods, particularly those with large concentrations of college students living off campus, are flooded with moving trucks this time of year. To see an interactive version of the map, click [here](#).



CITY OF BOSTON

If you park your car in the city, you may want to check if anyone near you has received a special permit for a moving truck, or for another reason, that may force you to move your car. You can look up permits by street name [here](#).

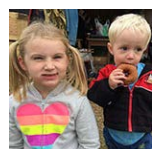
If you plan to drive around certain parts of the city this week, in a moving truck or other vehicle, you'll want to take note of the [temporary traffic and parking bans](#) in the Allston, Brighton, Fenway, Mission Hill, and Roxbury neighborhoods.

And, if you plan to drive a moving truck or any other unusually tall vehicle around the area, you'll want to remember to [avoid driving on Storrow and Memorial Drive and Soldiers Field Road](#). Those parkways have low-hanging overpasses that many moving trucks cannot fit under.

Matt Rocheleau can be reached at matthew.rocheleau@globe.com. Follow him on Twitter [@mrochele](#)

0 COMMENTS

SPONSORED BY VDTM & CABOT CHEESE



For family fun throughout fall, Vermont has it all

All the best spots for apple picking, farm tours, perfect picnics, bike rides, and more. [MORE...](#)

Top 10 Trending Articles

Most Viewed

Most Commented

Most Shared

Sarah Sanders starts press briefing with a lengthy story abo...

Former Channel 5 anchor Heather Unruh tweets about Kevi...

Is the George Papadopoulos case the real bombshell today?

Sizing up some possible Patriots trade targets

Big men with broken minds: The largely forgotten faces of t...

Netflix says it will end 'House of Cards'
My Account

The huge significance of the Papadopoulos plea deal
Manage my Account

[Mobile Customer Service](#)

[Sign Up For Newsletters](#)

Contact
[House washed away by New Hampshire river](#)

[Help](#)

[FAQs](#)

[Globe newsroom](#)

[Advertise](#)

Social

[Facebook](#)

[Twitter](#)

[Google+](#)

More

[ePaper](#)

[News in Education](#)

[Archives](#)

[Privacy policy](#)

[Terms of service](#)

[Terms of purchase](#)

[Work at Boston Globe Media](#)

