

You're invited: The Boston Globe Book Club's summer meet-ups. Click here to find out more information.

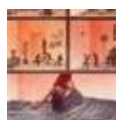
The Boston Globe

TEXT SIZE | MANAGE ACCOUNT | LOG OUT

Metro

		SECTIONS ▾	▾
NEWS ▶		METRO	Q
ARTS ▶		BUSINESS ▶	
SPORTS ▶		OPINION ▶	
POLITICS ▶		LIFESTYLE ▶	
MAGAZINE ▶		INSIDERS ▶	
TODAY'S PAPER ▶			
LOTTERY ▶		OBITUARIES ▶	
GLOBE NORTH ▶		GLOBE SOUTH ▶	
GLOBE WEST ▶		GETTING IN ▶	

Breaking News Small plane with two people aboard crashes in N.H. 7 minutes ago



REAL ESTATE
**Noisy neighbors?
You're on your own.**



OPINION
**Changing the dialogue
about work**



METRO
**A summons that
haunts**

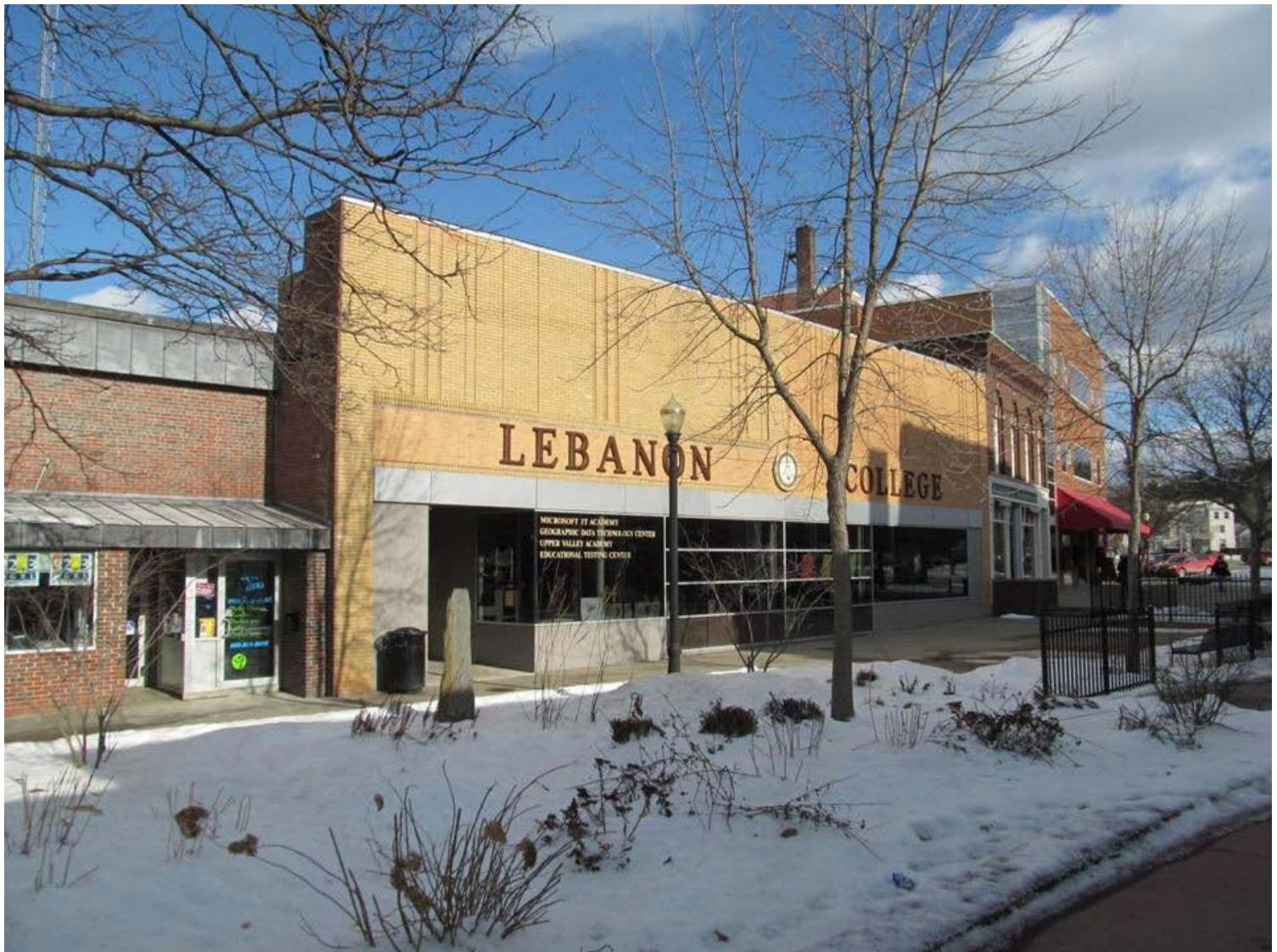
New Hampshire college cancels fall classes

By **Matt Rocheleau** | GLOBE CORRESPONDENT AUGUST 19, 2014



REPRINTS PRINT

ARTICLE COMMENTS (4) BACK TO TOP



JOHN PHELAN VIA WIKIMEDIA COMMONS

Lebanon College in New Hampshire has canceled its fall semester, campus officials announced Tuesday, six days before classes were to begin.

“We have had to minimize operations and cancel all fall 2014 classes,” the private two-year college said on its website, www.lebanoncollege.edu , which featured only the brief announcement

A promotional advertisement for Honda Village. At the top, it says "Honda Village" in a large, bold font. Below that, it says "LOCATED IN NEWTON" in a blue banner. To the right is the Honda Village logo. The main text reads "2014 Honda Accord LX Sedan" in blue. A red Honda Accord LX Sedan is shown in the center. Below the car, there is a "TRADE UP" logo and a "Sign and Drive" logo. At the bottom, it says "Trade + (\$0 DOWN) = NEW HONDA" and "\$221/MO" in large red letters.

“All student concerns will be addressed by the administration, and students can expect additional notification within the next several days,” the announcement added.

The Valley News reported Tuesday that the school’s president, Ron Biron, said in an e-mail that the semester’s cancellation is likely “the first step toward closing” the college.

The newspaper reported that the college has struggled financially, and has failed to meet student enrollment goals.

“We are saddened by the developments of this week and value our admin team, staff, faculty, alumnae, and current students who have made LC a wonderful institution in the Upper Valley,” a posting on the college’s Facebook page said.

According to federal Department of Education online data, the not-for-profit college enrolled just 150 students during the fall 2012 semester, the most recent data available. The college had more than 500 students a decade earlier, and nearly 1,000 in the mid-1980s.

The college opened in 1956 in Lebanon, which is on the Vermont border and about two hours northwest of Boston.

Matt Rocheleau can be reached at matt.rocheleau@globe.com.



REPRINTS PRINT

ARTICLE COMMENTS (4) BACK TO TOP

Learn more

SUBSCRIBE BOSTON GLOBE INSIDERS EPAPER EDITION NEWS IN EDUCATION

MY ACCOUNT

- LOGOUT
- MY SAVED LIST
- MANAGE HOME DELIVERY
- MANAGE ON IPHONE

CONTACT

- HELP
- FAQS
- GLOBE NEWSROOM
- ADVERTISE

SOCIAL

- FACEBOOK
- TWITTER
- GOOGLE+

Related

- Why some small colleges are in big trouble

MORE

[ARCHIVES](#)

[PRIVACY POLICY](#)

[TERMS OF SERVICE](#)

[TERMS OF PURCHASE](#)

[YOUR AD CHOICES](#)

[WORK HERE](#)

© 2014 BOSTON GLOBE MEDIA PARTNERS, LLC
