

Back Bay

25° | traffic | transit

home

news

events

discussions

search

GO

< Back to front page

Text size -

+

ALLSTON BRIGHTON, BACK BAY, BEACON HILL, CHARLESTOWN, CHESTNUT HILL, DORCHESTER, DOWNTOWN, EAST BOSTON, FENWAY-KENMORE, HYDE PARK, JAMAICA PLAIN, MATTAPAN, NORTH END, ROSLINDALE, ROXBURY, SOUTH BOSTON, SOUTH END, WEST ROXBURY

Street closures, parking bans planned in Boston for New Year's Eve

Posted by Matt Rocheleau December 26, 2013 11:16 AM

5 0 0 0

Comments (2)

E-mail story

Print story

Share

Facebook

Twitter

Pinterest

Share

Share

Boston NYE parking bans, street closures

Google Maps Engine

Map data ©2014 Google, Sanborn For non-commercial use Terms

Street closures are marked in red. Parking bans from Dec. 27 to Jan. 1 are colored in black. Jan. 1 parking bans are indicated in purple.

By Matt Rocheleau, Boston.com Staff

Some Boston streets will be closed to traffic -- and parking will be banned on others -- New Year's Eve for the city's annual First Night festivities.

City officials said they encourage people traveling in and around the city to use public transit, including the MBTA, which will offer free rides after 8 p.m. on New Year's Eve, as well as some extra service.

The following streets will be closed to vehicles:

- Boylston Street, from Massachusetts Avenue to Tremont Street, from 4 to 8 p.m. on Dec. 31
- Charles Street, from Park Plaza to Beacon Street, from 5 to 8 p.m. on Dec. 31

Connect to Back Bay

Follow @YourBackBay 1,488 followers

Like You and 239 others like this. 239 people like this.

Tweets

Follow

BackBay @ Boston.com @YourBackBay 9h
Back Bay ice box (Back Bay) bit.ly/1iD0DYW
Expand

BackBay @ Boston.com @YourBackBay 7 Feb
Snowy owl in the Public Garden (Back Bay) bit.ly/1fGKLBt

Tweet to @YourBackBay

BostonShops »



Let the shopping begin. Get exclusive promotions and sales from your favorite retailers. And never miss a great deal again.

See a sample SIGN UP NOW

Also From Back Bay

SHOPPING



Changes on Newbury Street

SWAN BOATS



- Dartmouth Street, from St. James Avenue to Boylston Street, *from 12 p.m. on Dec. 31 to 2 a.m. on Jan. 1*
- Atlantic Avenue, from Milk Street to Cross Street, *from 11:30 p.m. on Dec. 31 to 12:30 a.m. on Jan. 1*

Parking bans will be in effect from Friday, Dec. 27 through Wednesday, Jan. 1 at the following locations, which will be marked with “Tow Zone No Stopping” signs:

- Boylston Street, Copley Square side, from opposite #585 to opposite #575
- Blagden Street, Copley Square Library side, at the first two parking meters adjacent to Dartmouth Street.

Parking bans will be in effect on Tuesday, Dec. 31 at the following locations, which will be marked with “Tow Zone No Stopping” signs:

- Arlington Street, both sides, from Beacon Street to Boylston Street
- Atlantic Avenue, east side, from East India Row to Commercial Street, and west side, from Commercial Wharf to Cross Street
- Beacon Street, Public Garden side, from Charles Street to Arlington Street, and, both sides, from Charles Street to Walnut Street
- Berkeley Street, both sides, from Boylston Street to Newbury Street
- Boylston Street, both sides, from Dalton Street to Arlington Street, north side, Public Garden side, from Arlington Street to Charles Street, and, both sides, from Charles Street to Tremont Street. (**Note the Friday through Wednesday restriction for a portion of Boylston Street as well.*)
- Cambridge Street, both sides, from Court Street to Sudbury Street
- Central Street, both sides, from Old Atlantic Avenue to the Dead End
- Charles Street, Public Garden side, from Boylston Street to Beacon Street
- Clarendon Street, both sides, from Newbury Street to Boylston Street
- Court Street, both sides, from Washington Street to Cambridge Street
- Cross Street, both sides, from Atlantic Avenue to Hanover Street
- Dartmouth Street, both sides, from Boylston Street to Newbury Street
- Exeter Street, both sides, from Newbury Street to Boylston Street
- Fairfield Street, both sides, from Boylston Street to Newbury Street
- Gloucester Street, both sides, from Newbury Street to Boylston Street
- Hereford Street, both sides, from Boylston Street to Newbury Street
- Milk Street, both sides, from J.F.F. Surface Road to Old Atlantic Avenue
- Old Atlantic Avenue, both sides, from Milk Street to State Street
- Surface Road, both sides, from Sudbury Street to State Street

For a list of MBTA-related changes on New Year's Eve and New Year's Day, [click here](#).

E-mail Matt Rocheleau at matthew.rocheleau@globe.com.

For the latest updates about your community, follow some of our local neighborhood, city and town Twitter accounts, [here](#).

Swan Boats through the years

PHOTOS



Tiffany mansion a Back Bay jewel

LANDMARKS



Past, future of Christian Science Plaza

5 0 0 0

Share Facebook Twitter Pinterest Share Share

Comments (2)

E-mail story
Print story

PREVIOUS STORY

[Free rides after 8 p.m., extra service on MBTA for New Year's Eve](#)

FRONT PAGE

NEXT STORY

[Framingham restaurants raise money for family hit by house fire](#)

RELATED CONTENT

Sponsored Content by Taboola



If You Ever Want to Retire Look at This Chart
Money Morning



Little Known Way to Pay Off Mortgage
Weekly Financial Solutions



7 Foods You Should Avoid at All Costs
My Diet



Could You Have Major Depressive Disorder? - Video
HealthiNation



16 Songs Everyone Over 50 Should Own
AARP



Millennials are Drinking so Much Wine They're Changing How it's Sold
Parade

FROM THE WEB

[The 19 Must Have Stocks in 2014](#) (Newsmax)

[Experts Select The Best Credit Cards of 2014](#) (Next Advisor)

[Check Out the Surprising Car that Mark Zuckerberg Drives](#) (Wall St. Cheat Sheet)

[7 Healthy Foods that Turned Out to Be Unhealthy](#) (My Diet)

[Learn about the treatments for MS](#) (HealthiNation)

FROM BOSTON.COM AND PARTNER

[Woman on flight from Florida becomes ill and is pronounced dead at Logan Airport](#) (Boston.com)

[Top 10 stations where it's faster to drive into Boston than taking the train](#) (Boston.com)

[Christo's closes its doors after 49 years](#) (Boston.com)

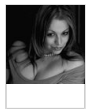
[Two MBTA buses crash on Mass Pike near Pru tunnel; drivers hurt, but no passengers](#) (Boston.com)

[Top 10 stations where it's faster to take the train into Boston than drive](#) (Boston.com)

Promoted Content by Taboola

Top comments

[View all \(2\)](#) | [Add comment](#)



bostonborn1965 12/31/13 08:30 AM

Tuesday is December 31st and that date would be correct. January 31st is a month from now and that is a Friday!

[Reply](#) [Like](#) [Dislike](#) [Report abuse](#)
(0) (0)



PeterSwainby 12/26/13 12:13 PM

I think you may have the date wrong! **"Parking bans will be in effect on Tuesday, Jan. 31"**

[Reply](#) [Like](#) [Dislike](#) [Report abuse](#)
(0) (0)

Please [log in](#) to comment.

[Home](#) | [Today's Globe](#) | [News](#) | [Business](#) | [Sports](#) | [Lifestyle](#) | [A&E](#) | [Things to Do](#) | [Travel](#) | [Cars](#) | [Jobs](#) | [Real Estate](#) | [Local Search](#)

[CONTACT BOSTON.COM](#) | [Help](#) | [Advertise](#) | [Work here](#) | [Privacy Policy](#) | [Your Ad Choices](#) | [Terms of Service](#) | [Newsletters](#) | [Mobile](#) | [RSS feeds](#) | [Sitemap](#)

[CONTACT THE BOSTON GLOBE](#) | [Subscribe](#) | [Manage your subscription](#) | [Advertise](#) | [Boston Globe Insiders](#) | [The Boston Globe Gallery](#) | © 2014 Boston Globe Media Partners, LLC