

Your Town

search

GO

< Back to front page

Text size - +

CHARLESTOWN, DORCHESTER, JAMAICA PLAIN, ROXBURY, SOUTH BOSTON

City: Help us pick where to put new Hubway stations in South Boston, Jamaica Plain, Dorchester, Charlestown

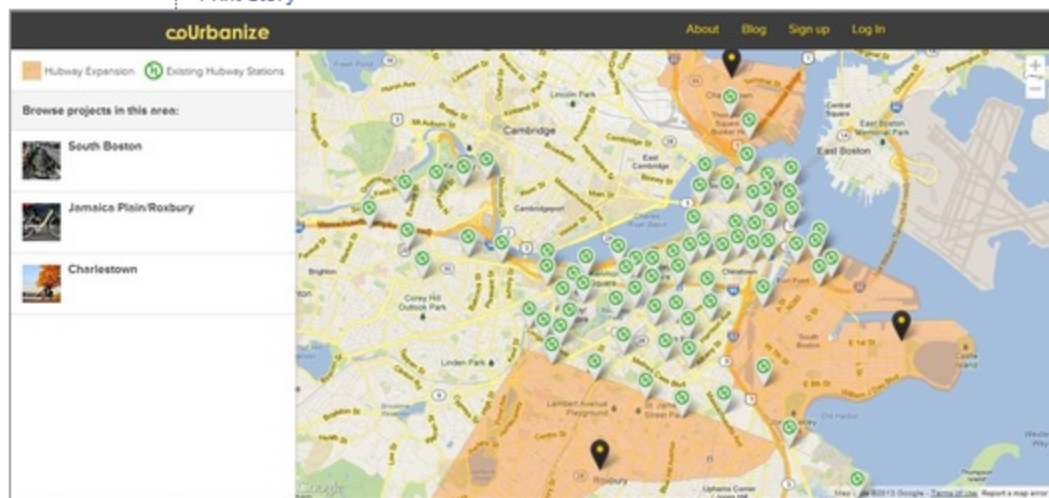
Posted by Matt Rocheleau May 16, 2013 06:32 PM

Share

Comments ()

E-mail story

Print story



(CoUrbanize)

A screenshot of the CoUrbanize website, which shows a map of existing Hubway stations and the areas being looked at for new stations.

By Matt Rocheleau, Town Correspondent

BostonShops »



Let the shopping begin. Get exclusive promotions and sales from your favorite retailers. And never miss a great deal again.

SEE A SAMPLE

SIGN UP NOW

JAMAICA PLAIN REAL ESTATE »

142
Homes
for sale

40
Rentals
available

27
Open
houses this
week

1
New listings
this week

SPECIAL ADVERTISING DIRECTORY

CAMP GUIDE »



A camp for every kid!

Adventure, sports, theater, music, arts or technology—find the perfect camp for your child at boston.com/campguide.

Boston residents and area cyclists can provide feedback about proposed locations for new Hubway stations as the bike-share program gears up to expand to the South Boston Innovation District, Jamaica Plain, North Dorchester, and Charlestown, city officials announced Thursday.

The city has selected Boston-based startup company [CoUrbanize](#) to provide a public on-line forum that offers information about Hubway's expansion to those neighborhoods and ways for users to weigh in on where new stations should go.

The initial public comment period will run from May 16-June 6, officials said. CoUrbanize will provide updates about the selection of Hubway station locations and about the roll-out process through the coming fall.

"Hubway is a true community project and we're excited to be expanding the program to new neighborhoods," said a statement from Mayor Thomas M. Menino said. "Our partnership with CoUrbanize will engage the community through every stage of this expansion as we continue to develop innovative solutions."

CoUrbanize offers a community management platform for leaders of various ventures, like developers planning to build something new, to share project information and to solicit public feedback, officials said.

"We will improve the development process by efficiently getting information out to the public and providing community feedback to Boston Bikes" said a statement from Karin Brandt, the company's co-founder and CEO. "CoUrbanize helps developers reach a wide audience to quickly learn about and respond to community concerns."

For more information and to access to the online forum, visit www.courbanize.com.

E-mail Matt Rocheleau at mjrochele@gmail.com.

--

For the latest updates about your community, follow some of our local neighborhood, city and town Twitter accounts, [here](#).

[Tweets](#)

[Follow @BostonDotCom](#)

Share

E-mail story
Print story



PREVIOUS STORY

**Melrose's Jennifer Cain
headed to Merrimack to
play volleyball**

FRONT
PAGE

NEXT STORY

**Milton assistant town administrator
to double as HR director**

[Home](#) | [Today's Globe](#) | [News](#) | [Business](#) | [Sports](#) | [Lifestyle](#) | [A&E](#) | [Things to Do](#) | [Travel](#) | [Cars](#) | [Jobs](#) | [Real Estate](#) | [Local Search](#)

[CONTACT BOSTON.COM](#) | [Help](#) | [Advertise](#) | [Work here](#) | [Privacy Policy](#) | [Your Ad Choices](#) | [Terms of Service](#) | [Newsletters](#) | [Mobile](#) | [RSS feeds](#) | [Sitemap](#)

[CONTACT THE BOSTON GLOBE](#) | [Subscribe](#) | [Manage your subscription](#) | [Advertise](#) | [Boston Globe Insiders](#) | [The Boston Globe Gallery](#) | © NY Times Co.