

Jamaica Plain

home news events discussions search

< Back to front page

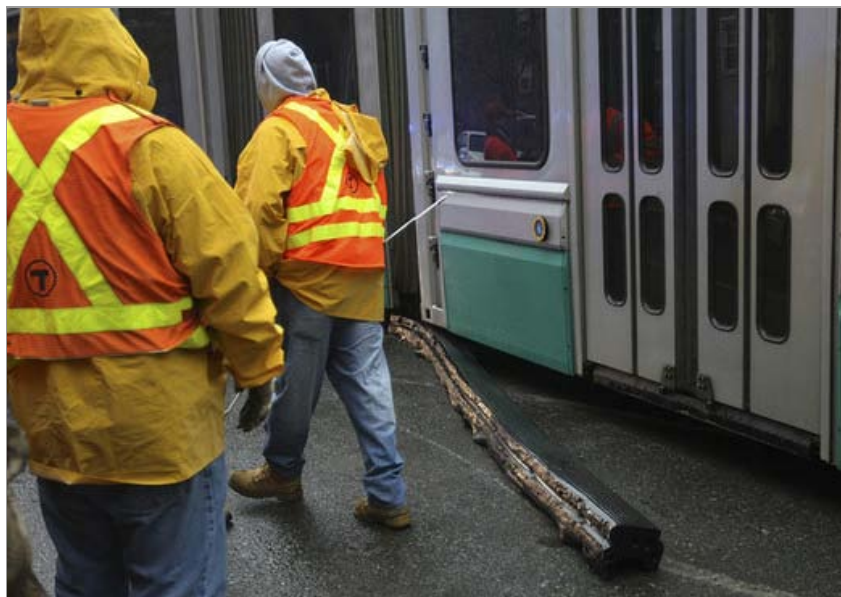
Text size - +

JAMAICA PLAIN, ROXBURY

Green Line's E branch service to stop short due to derailment-related fix

Posted by Matt Rocheleau June 1, 2011 05:01 PM

E-mail | Print | Comments ()



(David L. Ryan / Globe file photo)

A Green Line trolley derailed on South Huntington Avenue April 13, forcing police to close the street to traffic for about an hour and a half and prompting the T to suspend E branch trolley service between Heath Street and Brigham Circle for nearly five hours. The derailment appeared to be caused by a dislodged rubber seal, a long rubber strip that abuts the rail where the track is embedded in asphalt.

By Matt Rocheleau, Town Correspondent

Beginning Wednesday, service on the Green Line's E branch will terminate at the Brigham Circle stop during off-peak hours, cutting off service to the line's final five stops, according to MBTA officials.

"Necessary track maintenance" related to a [derailment along the E branch in mid-April](#) will be performed, T officials said. Regular service is expected to return to the E Branch within the next month, said spokeswoman Lydia Rivera in an e-mail.

For service during off-peak hours between Heath Street and Brigham Circle, commuters are advised to take the MBTA's Route 39 bus, which runs a parallel route to the E branch trolley for that stretch along South Huntington and Huntington avenues.

ADVERTISEMENT

JAMAICA PLAIN REAL ESTATE »

142
Homes
for sale

40
Rentals
available

27
Open houses
this week

1
New listings
this week

SPECIAL ADVERTISING DIRECTORY

CAMP GUIDE »



A camp for every kid!

Adventure, sports, theater, music, arts or technology—find the perfect camp for your child at boston.com/campguide.

ADVERTISEMENT

The Boston Home Center

WORRIED ABOUT PAYING YOUR MORTGAGE? LOOKING FOR OPTIONS?

YOU DON'T NEED TO PAY TO LEARN IF YOU'RE ELIGIBLE FOR A LOAN MODIFICATION!

CALL US FIRST!

www.bostonhomecenter.com
or call 617-635-HOME (4663)

City of Boston, Thomas M. Menino, Mayor
Department of Neighborhood Development
Evelyn Friedman, Chief and Director

Jamaica Plain Headlines »



Peak hours are from 7 to 9 a.m. and 3 to 6:30 p.m., the spokeswoman said.

The MBTA website said: "This service change will be in place until further notice as we complete necessary track maintenance."

The stops past Brigham Circle that will be cut off from service during non-peak times are: Fenwood Road, Mission Park, Riverway, Back of the Hill, and Heath Street.

E-mail Matt Rocheleau at mjrochele@gmail.com.



[Previous entry](#)

[Next entry](#)

MORE FROM BOSTON.COM

[Two Mass. doctors disciplined; one had 2 patients die](#) *(Lifestyle)*

[Hingham teen badly injured in 'freak' accident](#) *(Your Town)*

[NHL to Thornton: No Red Sox cap](#) *(Bruins Blog)*

[Aging MBTA trolley cars need \\$100M in upgrades](#) *(Local News)*

[A path filled with benefits, both spiritual and commercial](#) *(Travel)*

[Big-name developers waiting in the wings](#) *(Your Town)*

MORE FROM THE WEB

[6 Baby Products You Don't Need To Buy](#) *(Man of the House)*

[True Confessions: My Wife's Gone for the Weekend](#) *(Man of the House)*

[Why Every Guy Should Buy a Battery Backup for a Computer](#) *(Man of the House)*

[4 Restaurants Where You'll Never, Ever, Get a Table](#) *(The Daily Meal)*

[Find out how one woman paid off \\$30,000 to become debt-free.](#) *(CareOne)*

[The Average Salary of an Airline Stewardess](#) *(eHow)*

[Sponsored links]



READER COMMENTS »

[View reader comments \(\)](#) » [Comment on this story](#) »

- JP youth group's advocacy awarded; 2 high-profile campaigns highlighted (3 days ago)
- Bill Clinton to honor 3 Boston schools for healthiness (1 week ago)
- Former Blessed Sacrament convent to reopen as homeless housing (6/8)
- Two members resign from JP committee exploring Whole Foods' plans (6/7)

Also From Jamaica Plain

HI-LO TO WHOLE FOODS



Recent changes in JP

AFTERMATH



Pizzeria sees continued support

JAMAICA PLAIN HISTORY



Inn, founded by brewers, quenched local thirst

NIGHTLIFE



A night out in Jamaica Plain



Local advertising by PaperG



Jamaica Plain On Twitter »

[New rules coming for rooftop bars around #Fenway.](#) - <http://bo.st/jgfzBv> 2 days ago

[1st step of Jackson Square overhaul OK'd. Rec center to fill void on #JP-#Roxbury border](#) - <http://bo.st/kmzwUg> 2 days

ago

JP youth group Hyde Square Task Force's advocacy awarded; 2 high-profile campaigns highlighted @MA_NonprofitNet? - <http://bo.st/iLwhBp> 2 days ago

JP youth group's advocacy awarded; 2 high-profile campaigns highlighted <http://bo.st/iLwhBp> 2 days ago

[Follow other Boston.com Tweets](#) | [What is Twitter?](#)

[Home](#) | [News](#) | [Events](#) | [Schools](#) | [Sports](#) | [Discussions](#) | [Marketplace](#)

[Contact Us](#) | [Contact Boston.com](#) | [Contact The Boston Globe](#) | [Privacy Policy](#) | [Your Ad Choices](#) | [Help](#) | [Advertise](#) | © 2011 NY Times Co.