

Hyde Park

56° | traffic | transit

Ads by Google [what's this?](#)

U.S. Census Records
Search the U.S. Census Collection
1790-1930. Millions of Names.
www.ancestry.com

New City Church PCA
Celebrating Christ,
Serving Cincinnati
newcitycincy.org

College Grants For Women
You May Qualify For Pell Grants To
Earn A Degree Online. Start Today!
www.classesandcareers.com/PellGrant

- home
- news
- events
- schools
- sports
- discussions
- search

< Back to front page

Text size - +

HYDE PARK

Census data: African Americans now outnumber whites in Hyde Park

Posted by Matt Rocheleau April 6, 2011 12:00 PM

E-mail | Print | Comments (1)

By Matt Rocheleau, Town Correspondent

Hyde Park now has more African American residents than whites, according to census data recently released by the city.

NEIGHBORHOOD NUMBERS

Select a neighborhood below from the dropdown to see a breakdown of Census statistics.

Select a neighborhood

RELATED STORIES

- Allston population spiked 14 percent over past decade
- African Americans now outnumber whites in Hyde Park
- Back Bay population rose less than one percent from 2000
- Beacon Hill population rose 3.5 percent from 2000
- Brighton population grew 4 percent in past decade
- Dorchester lost most residents among city neighborhoods
- Downtown population soared 46 percent
- Hispanics/Latinos surpass whites in East Boston
- Fenway saw 2nd-highest rate of population growth
- JP's Hispanic, black populations plunged
- Mattapan's population dropped at second-highest rate in city
- North End grew, but kept 'Little Italy' feel over past decade
- Roslindale saw population decline
- Roxbury gained most residents among city neighborhoods
- South Boston population grew 12 percent from 2000
- South End population spiked 12

Between 2000 and 2010, Hyde Park's population rose 1.9 percent to 30,637, according to figures the Boston Redevelopment Authority compiled from U.S Census Bureau data.

The neighborhood's African American population grew 22 percent to 14,476 residents. That represents 47.3 percent of Hyde Park's total residents, making the neighborhood second only to Mattapan in terms of its percentage of African American residents.

There was a 67 percent increase in the number of Latinos, to 6,034 last year. The portion of Latinos climbed from a 12-percent representation of the neighborhood's resident total in 2000 to a 19.7-percent last year.

Meanwhile, a 33.9-percent drop in white residents in Hyde Park was the greatest percentage drop citywide and pushed the segment from a majority 43.5 percent in 2000 down to 28.2 percent of Hyde Park's census total.

Boston's population grew by 4.8 percent in the past decade to hit 617,594. The Hub remained a "majority-minority" city as 53 percent of residents are of a non-white race/ethnicity while 47 percent are white. In Boston, 47 percent of residents are white, 22.3 percent are Black/African American, 17.5 percent are

Connect to Your Town Hyde Park on Facebook

Like You like **Your Town Hyde Park**. · Admin Page · Insights · **Error**
You and 95 others like this. 95 likes. Sign Up to see more.

ADVERTISEMENT

Ads by Google [what's this?](#)

Buy a Condo in Boston
Get the Best Buyer Representation
Contact Us for a Free Market Update
www.BallastRealty.com/buying
Maplewood Reserve Condos
New Construction Town Homes in
North Andover, MA. Official Website
www.maplewoodreserve.com
Boston One-Day Deals
Sign Up To Get 50-90% Off Top Area
Restaurants, Spas & Entertainment.
www.BuyWithMe.com

HYDE PARK REAL ESTATE »

75 Homes for sale	14 Rentals available	7 Open houses this week	1 New listings this week
--------------------------------	-----------------------------------	--------------------------------------	---------------------------------------

SPECIAL ADVERTISING DIRECTORY

CAMP GUIDE »

A camp for every kid!
Adventure, sports, theater, music, arts or technology—find the perfect camp for your child at boston.com/campguide.

ADVERTISEMENT

Ads by Google [what's this?](#)

Merrill Lynch Webcast
Learn What Young Americans Need
To Know About Retirement Now.
www.TotalMerrill.com/retirement

Dirt Cheap Apartments
Find Studio, 1, 2 & 3 BR Apartments
View Photos, Floor Plans, Prices!
www.eCheapApartments.com

FreeCreditReport.com®
See Your Credit Score in Seconds.
Easy to Read and Viewable Online!
www.FreeCreditReport.com

Hispanic/Latino, and 8.8 percent are Asian.

percent over decade
West Roxbury's minority populations boomed from 2000

While Boston gained over 41,000 people age 18 years and older, the city lost around 13,000 residents under 18. The 11-percent drop was among the most notable statistics for research director at Boston think-tank MassINC Benjamin Forman.

"There's no question that family households have been replaced by people without kids," he said, adding that a trend of fleeing families can often be a sign of gentrification.

The ratio of total residents 18 years or older grew in all but five neighborhoods; in Hyde Park it grew from 74.3 to 76.5 percent. Citywide, that ratio grew from 80 to 83 percent.

The total number of housing units in Hyde Park rose over the past 10 years by 4.7 percent to 11,816, while housing vacancies jumped from 3.3 to 6.2 of the total housing stock.

Citywide, housing grew by around 25,000 units, or 8 percent, however, vacancies also rose by 60 percent. Around 5 percent of Boston homes were empty in 2000; in 2010, around 7.25 percent of housing was vacant.

Boston's neighborhoods have no officially-defined boundaries, according to the BRA. In order to sort census data by neighborhood, the city department said it used a combination of ZIP codes and zoning boundaries to define each neighborhood's borders.

While the neighborhoods the city has mapped out for census number crunching by-and-large match how most perceive Boston's configuration, the city acknowledged some may dispute how the BRA has defined where neighborhoods begin and end.

"Everyone has their own definition of 'their' neighborhood -- the best part about Boston is there is such pride in the question -- and therefore there are no official boundaries because if there were, we'd have 617,594 different opinions," said spokeswoman Susan Elsbree.

The department plans to release additional maps and is also fielding individual requests to have data provided based on customized neighborhood boundaries.

To simplify city data analyzed for this report, Boston.com grouped, as follows, smaller neighborhoods and districts into other, larger areas creating a total of 18 city subsections: Beacon Hill includes the West End; Downtown includes Chinatown and the Leather District; Roxbury includes Mission Hill and the Longwood Medical Area; South Boston includes the South Boston Waterfront; and the South End includes Bay Village. The Harbor Islands -- with a combined population of 640 and 535 residents during the 2000 and 2010 census, respectively -- were not used in this analysis.

However, raw data is still available here for each smaller neighborhood, district and islands that the BRA defined.

E-mail Matt Rocheleau at mjrochele@gmail.com.



◀ Previous entry

Next entry ▶

Hyde Park Headlines »

- BOSTON: Hyde Park man convicted of raping child (1 day ago)
- Why are some of us so interested in making over our spouses? (5 days ago)
- Delivery of fake grenade causes commotion in Dedham (3/30)

Also From Hyde Park

AFTERMATH



Months after blast leveled home, couple still picking up the pieces

PHOTO GALLERY



Trampoline park says have fun, keep it safe

STOLEN DRUGS INQUIRY



No leads in theft from police facility

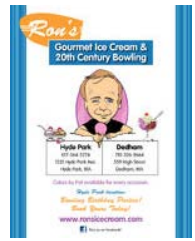
READVILLE



Bikes to your specifications

Flyerboard

Post Flyer
View All



Local advertising by PaperG

Hyde Park On Twitter »

Good news: #MBTA riders get 1 more year w/o fare increase. Bad news: Some red/orange-line improvements deferred - <http://bo.st/f1vaSt> 2 days ago

What, no sodas? -- Boston to ban sugary drinks on city property - <http://bo.st/gjJljs> 2 days ago

MORE FROM BOSTON.COM

Peabody teen and Lynn man injured in Route 1 crash in Peabody *(Your Town)*

Medford police arrest four on drug possession *(Your Town)*

She's a STAGE FIVE clinger *(Love Letters)*

For homeless kids (and moms), one wish *(Lifestyle)*

Another strong quake strikes off tsunami-hit Japan *(World News)*

Jay Severin fired from WTKK-FM *(Names)*

MORE FROM THE WEB

What \$1,500 a Month Gets Homebuyers Today *(FoxNews.com)*

Fox News: Obese Ohio Man Dies After Being Fused to Chair for 2 Years *(FoxNews.com)*

Multimillion-Dollar Homes on Sale for Half Price *(FoxNews.com)*

If You Bought 100 Shares of MSFT 25 Years Ago *(PC World)*

100 Things to Make Your Home a Safer Place to Live *(Safety at Home)*

Wells Fargo in settlement with SEC *(Financial Times)*

[Sponsored links]

RT @HydeParkMass: On Thursday evening, the monthly meeting of the Hyde Park Neighborhood Association, all are welcome to attend. [http:// ... 3 days ago](#)

RT @HydeParkMass: Monthly meeting of the Friends of the Hyde Park Library. all welcome <http://fb.me/WaiQihT23>
Follow other Boston.com Tweets | What is Twitter?



READER COMMENTS »

[View reader comments \(1\)](#) » [Comment on this story](#) »

[Home](#) | [News](#) | [Events](#) | [Schools](#) | [Sports](#) | [Discussions](#) | [Marketplace](#)

[Contact Us](#) | [Contact Boston.com](#) | [Contact The Boston Globe](#) | [Privacy Policy](#) | [Your Ad Choices](#) | [Help](#) | [Advertise](#) | © 2011 NY Times Co.