

Jamaica Plain

[home](#) [news](#) [events](#) [discussions](#) [search](#)

[< Back to front page](#)

Text size [-](#) [+](#)

JAMAICA PLAIN

Work to install Jamaicaaway traffic light set to begin in November

Posted September 16, 2010 03:43 PM

[E-mail](#) | [Link](#) | [Comments \(0\)](#)



(Courtesy DCR)

Initial plans shown at a January public meeting for changes to the intersection of Jamaicaaway and Eliot Street.

By Matt Rocheleau, Town Correspondent

The installation of a pedestrian-activated traffic light and other roadwork at the intersection of the Jamaicaaway and Eliot Street is set to begin in November.

The project is scheduled to be finished in the spring and includes the traffic signal, roadway realignments, median alterations, new signs, and steps to make the intersection more handicapped-accessible.

The price tag for the construction is expected to be around \$170,000, according to the Department of Conservation and Recreation, which is using its capital funds to pay for the project.

The conservation department is soliciting bids and expects to award a contract for the work this fall, spokeswoman Wendy Fox said.

Once a contract is awarded, a public meeting will be scheduled to address

Connect to Your Town Jamaica Plain on Facebook

[Like](#) You like **Your Town Jamaica Plain**. [Unlike](#) · [Admin](#)
Page · **Error**
You and 17 others like this. 17 people like this.

ADVERTISEMENT

Ads by Google [what's this?](#)

GE LED Traffic Signals

Up to 90% energy-cost savings and a long-life of up to 50,000 hours.

ecomagination.com/LED_Traffic_Light

Jamaica Plain Condos

Condo & Single Family Sales Jamaica Plain Neighborhood Experts

www.RobertaStone.com

ADVERTISEMENT

Jamaica Plain Headlines »

- [Eight vacant Jamaica Plain buildings identified as problem properties \(12 hours ago\)](#)

Flyerboard

[VIEW ALL](#)

construction hours and how the work will affect traffic. Sketches of the intersection redesign will be also available, she said.

The four-lane Jamaicaaway runs along the eastern edge of Jamaica Pond. Eliot Street, a one-way roadway that heads east of the pond, is a common spot for pedestrians and bicyclists to cross en route to paths circling the pond.

“The expectation is that the new light will not have an adverse effect on Jamaicaaway vehicle traffic,” Fox said.

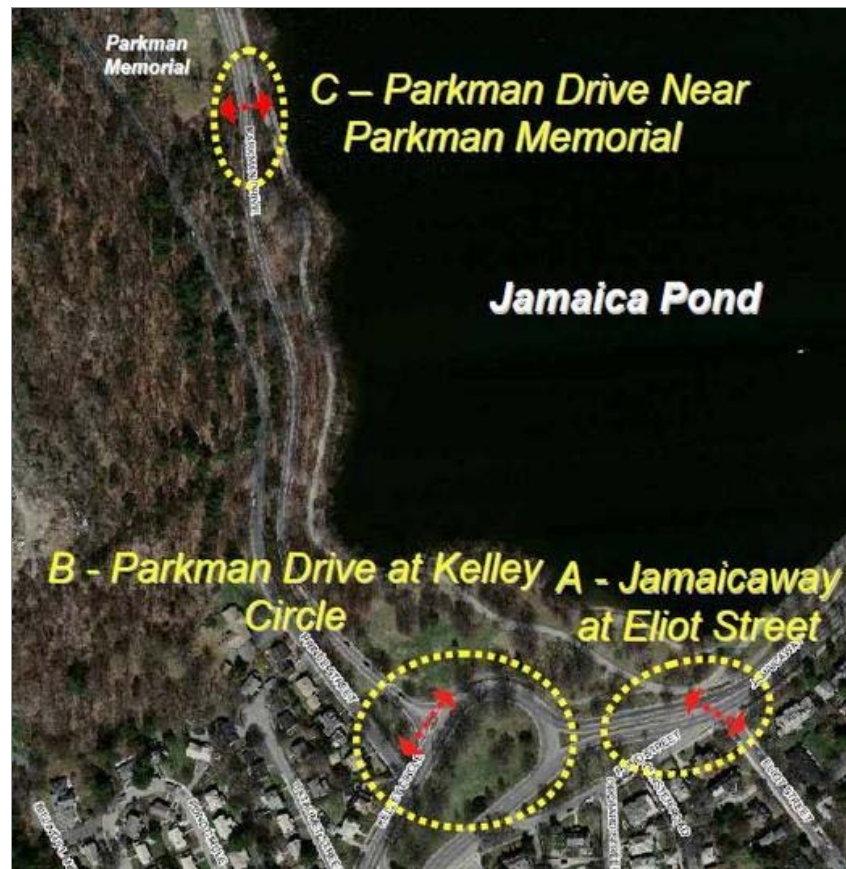
The redesign plans for the intersection were drawn up under a partnership between the conservation department and the Emerald Necklace Conservancy. Two public meetings were held to solicit ideas for the intersection of Eliot and Jamaicaaway and for changes to two other neighborhood intersections on the opposite site of Jamaica Pond along Parkman Drive – near Parkman Memorial and at Kelley Circle.

“Eliot Street was the top priority of residents and participants in DCR’s public meetings,” Fox said. “DCR will address the other two locations as funding becomes available.”

The other two locations would cost around \$200,000 combined, according to an [initial presentation](#) made in January.

“The Eliot Street crossing will provide the neighborhood and other park users a protected and safe way to conveniently reach one of Boston's most beloved parks,” said Julie Crockford, president of the Emerald Necklace Conservancy. “The project exemplifies what we can accomplish in a public-private partnership, and my hope is that other two crossings will be built next year.”

E-mail Matt Rocheleau at mjrochele@gmail.com.



(Courtesy DCR)

- A teacher and politician whose reading inspired her to serve (3 days ago)
- BRADY'S AUDI (AUDI'S BRADY): Not 'one of us'? Thank heavens (3 days ago)
- Centre/South Street redesign plans to be unveiled Tuesday (4 days ago)

Also From Jamaica Plain

DESIGNING



Ceramist Isabelle Abramson's artistry

NIGHTLIFE



A night out in Jamaica Plain

PHOTOS



A church reborn

LOCAL ARTISTS



Sculpting a better life for others

AROUND THE CORNER
Custom Wedding Invitations
Floral Stationery

abille
Experienced the special art of creating
wedding and event stationery
and invitations with your vision in mind
With one of the widest selections of
fonts and color combinations, you
can be assured we'll find the exact
design that brings everything your
wedding together and makes it the
day to remember.

657 Tremont St
Boston, MA 02118
617.266.1800
www.abille.com

GIFTS
CLASSES
PARTIES
BRIDAL
SUPPLIES
REPAIRS

**YOUR FLYER
HERE**
Advertise your
local business,
listing, or event on
the Flyerboard.

Local advertising by PaperG






Jamaica Plain On Twitter »

Boston Harbor Islands national park area - today (9/15)
from 9:00am to 6:00pm - <http://b.globe.com/bb7nDJ> 5 days ago

Boston Harbor Islands national park area - today (9/14)
from 9:00am to 6:00pm - <http://b.globe.com/czMppG> 7 days ago

Boston Harbor Islands national park area - today (9/9)

Initial design plans shown at a January public meeting for changes to roadways surrounding Jamaica Pond to improve pedestrian access to trails circling the pond.

 Twitter |
  Digg |
  Like |
  You like this. [Unlike](#) · [Admin](#) |
  Boston Buzz

[◀ Previous entry](#) |
 [Next entry ▶](#)

Thought you might like ...

SPONSORED LINKS:

- [What Causes Blindness?](#) (EverydayHealth.com)
- [The Best Websites to Find a Job in Your 30s and 40s](#) (Man of the House)



- [Police busy with drunken driving arrests](#) (Your Town)
- [Waltham pair charged after minivan drags officer in N.H.](#) (Your Town)
- [Mass. woman in womb-cut case gives DNA sample](#) (Local News)
- [MC student earns top score in Spanish](#) (Your Town)



READER COMMENTS »

[View reader comments \(0\)](#) » [Comment on this story](#) »



One day. One thousand memories.

[Home](#) | [News](#) | [Events](#) | [Schools](#) | [Sports](#) | [Discussions](#) | [Marketplace](#)

[Contact Us](#) | [Contact Boston.com](#) | [Contact The Boston Globe](#) | [Privacy Policy](#) | [Help](#) | [Advertise](#) | © 2010 NY Times Co.



Save up to 75% on Cruises!

Last-minute deals from top cruise lines. [GO](#)

VACATIONS ToGo.com

from 9:00am to 6:00pm - <http://b.globe.com/bID3d7> 12 days ago

[Boston Harbor Islands national park area - today \(9/8\)](#)

[Follow other Boston.com Tweets](#) | [What is Twitter?](#)